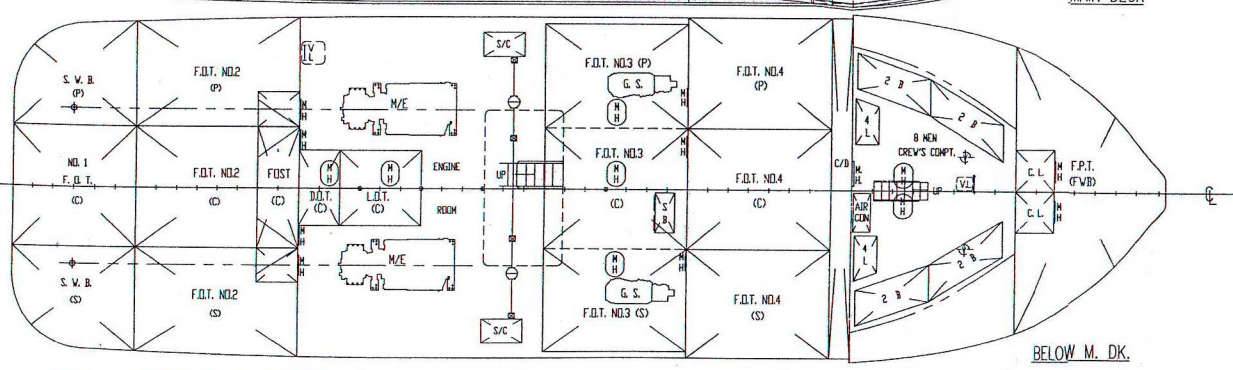
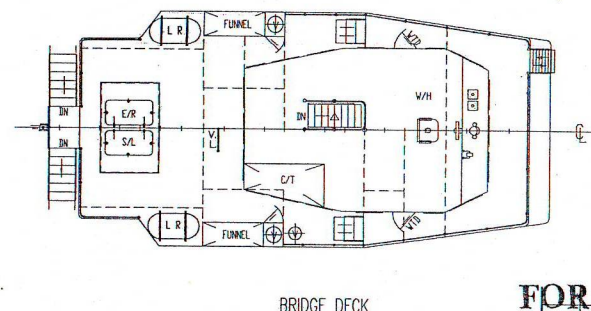
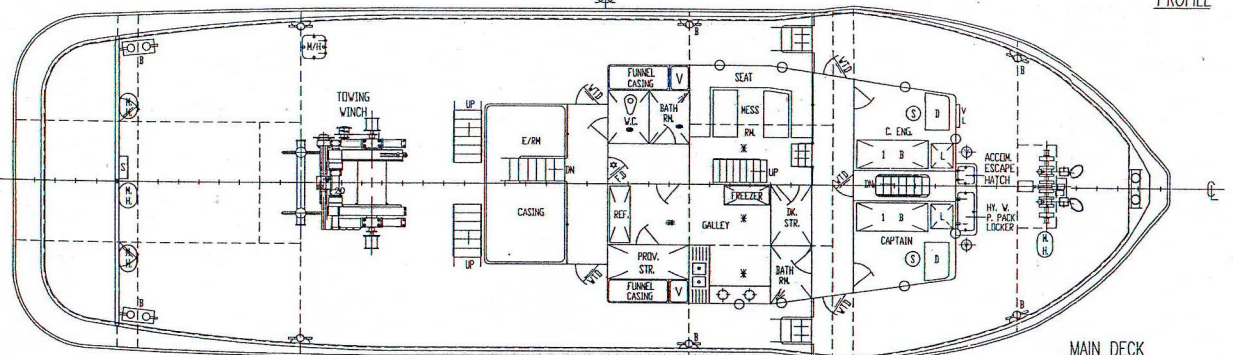
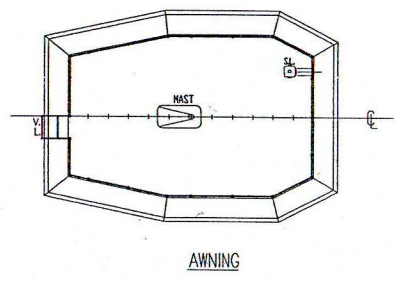
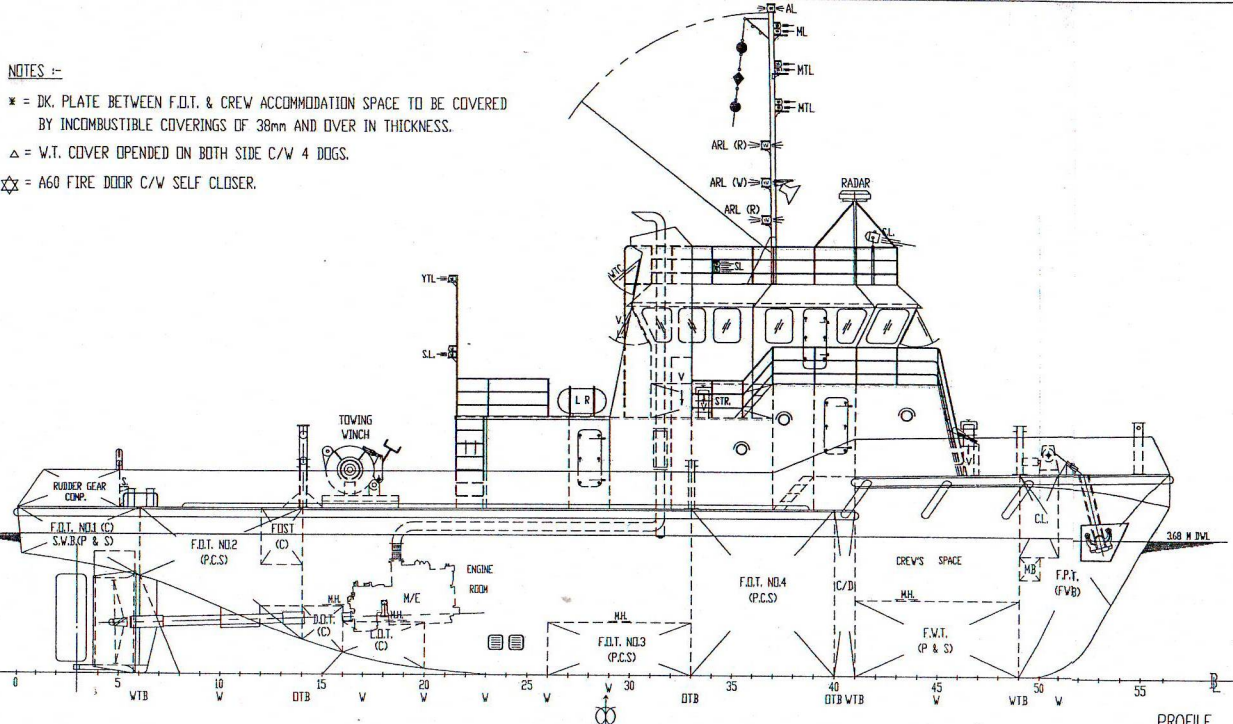


NOTES :-

* = DK. PLATE BETWEEN F.D.T. & CREW ACCOMMODATION SPACE TO BE COVERED BY INCOMBUSTIBLE COVERINGS OF 38mm AND OVER IN THICKNESS.

△ = W.T. COVER OPENED ON BOTH SIDE C/W 4 DOGS.

☆ = A60 FIRE DOOR C/W SELF CLOSER.



PRINCIPAL PARTICULAR

L. O. A.	T	30.000 M (98.43 FT)
L. B. P.	T	27.905 M (91.56 FT)
BEAM MLD.	T	9.000 M (29.53 FT)
DEPTH MLD.	T	4.380 M (14.37 FT)
DESIGNED DRAFT	T	3.680 M (12.07 FT)
CREWS	T	10 MEN
FUEL OIL	T	265.00 M ³ (100 % FULL)
FRESH WATER	T	30.00 M ³ (100 % FULL)
BALLAST (FW)	T	38.00 M ³ (100 % FULL)
BALLAST (SW)	T	20.00 M ³ (100 % FULL)
DIRTY OIL	T	2.10 M ³ (100 % FULL)
LUB. OIL	T	4.20 M ³ (100 % FULL)
MAIN ENGINE	T	2 X CUMMINS KTA-38-M2 1200 BHP / 1800 RPM EACH
GEAR BOX	T	TWIN DISC MG 5321 5.96 : 1 RATIO
GENERATOR	T	2 X 78 KW EACH
SPEED	T	10 KNOTS (FREE RUNNING) (APPROX.)
DESIGNED B.P.	T	30 TONNES (APPROX.)

FOR CONSTRUCTION

DATE	MODIFICATION	REV	BY
BRN			
WANG SANG & ASSOCIATES SDN. BHD.			
(COMPANY NO.587290-11)			
MARINE DESIGNS ENGINEERING & SURVEYING SDN. BHD.			
2nd FLOOR, 4C, LORONG JONG KONG, 96000			
GPO L/B 18, NCS 50212, 96009			
SIBU, SARAWAK, MALAYSIA.			
TEL:- 084-331582, 316434 (D), 388375 (R); FAX:- 084-322098			
EMAIL : richwg@pc.jaring.my			
13 MAR 2008			
30M T. S. TUG			
GENERAL ARRANGEMENT			
OWNER	SAPANGAR SHIPYARD SDN. BHD., SABAH	Y.D. NO.	SS022
BUILDER	NK NS * (TUG)	P.O.R.	S'PORE
CLASS	UNRESTRICTED AREA	TRADE	JOB NO. 00908
BRN	TRACED	CHECKED	SCALE
10/3/2008		PAUL WONG	1 : 100
		11/3/2008	WS01373-08-G