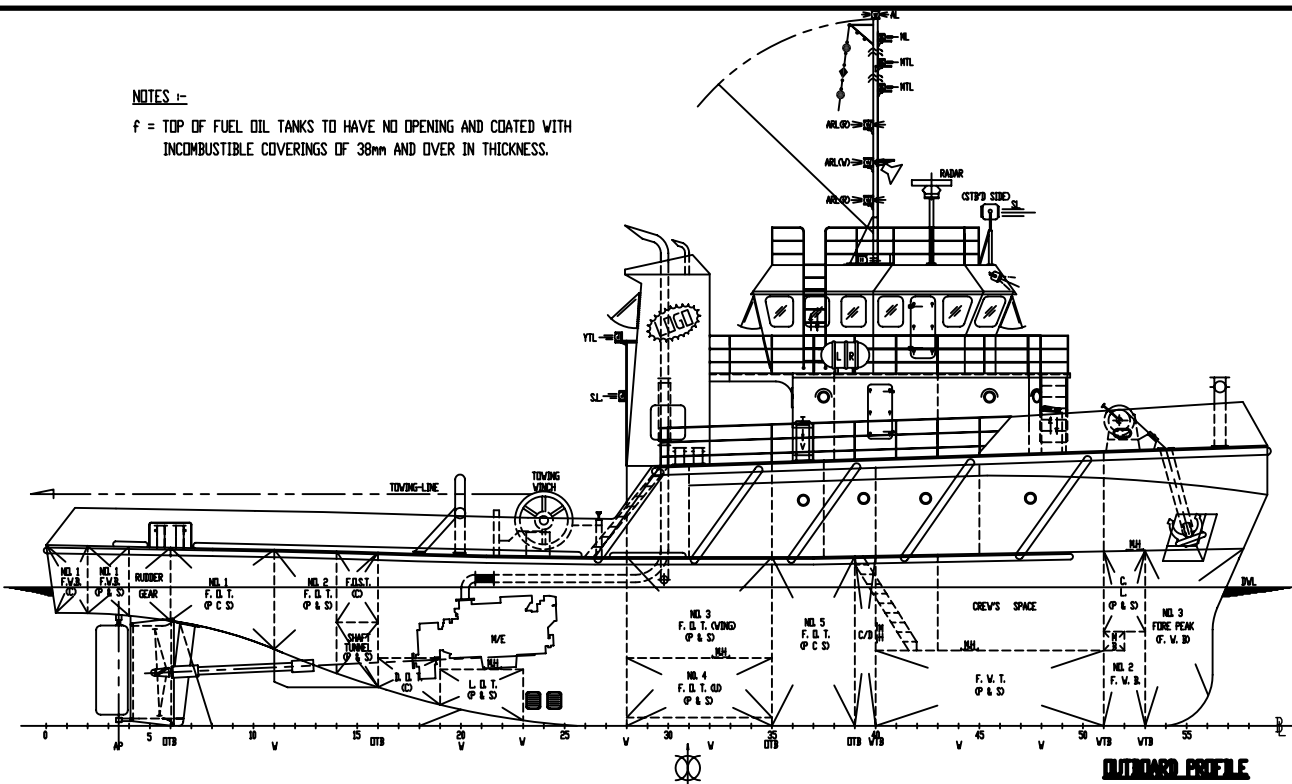
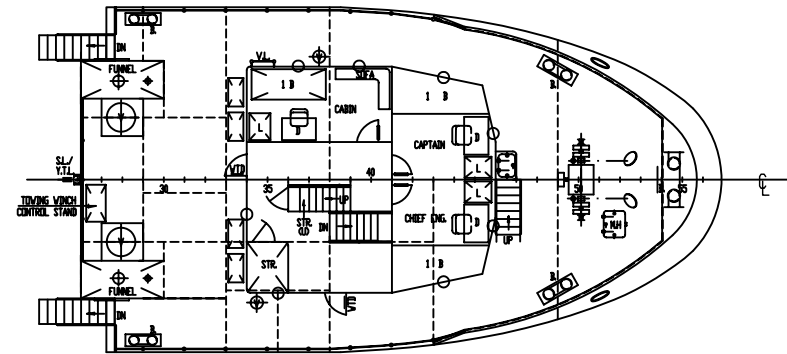


NOTES :-

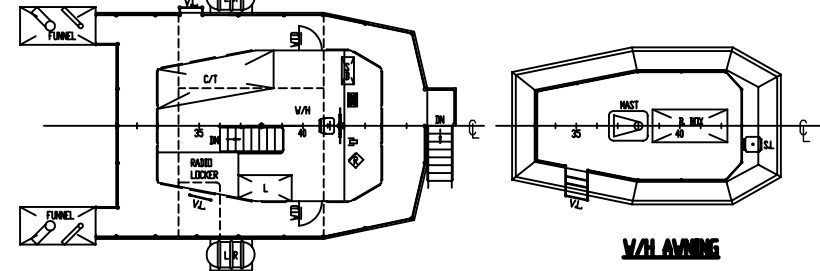
F = TOP OF FUEL OIL TANKS TO HAVE NO OPENING AND COATED WITH INCOMBUSTIBLE COVERINGS OF 38mm AND OVER IN THICKNESS.



OUTBOARD PROFILE

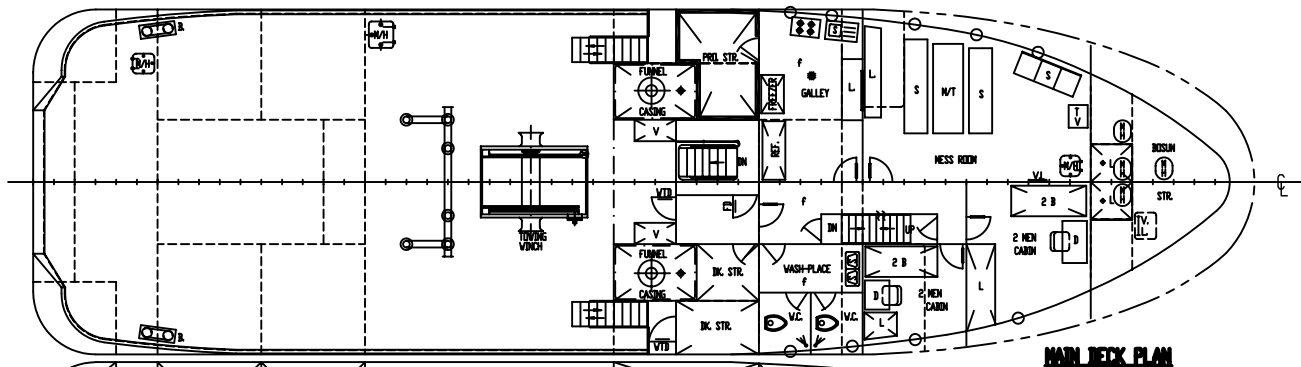


FIRECASTLE DECK

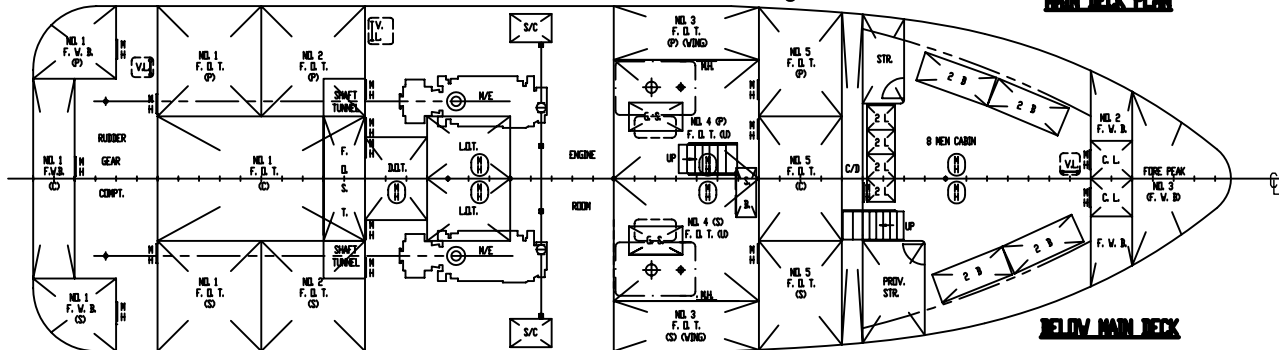


MIDDE DECK

V/H ANNING



MAIN DECK PLAN



BELOW MAIN DECK

PRINCIPAL PARTICULARS :-

LENGTH O. A.	32.40 M (106.30 FT)
LENGTH B. P.	29.38 M (96.39 FT)
BEAM MLD	9.15 M (30.00 FT)
DEPTH MLD	4.48 M (14.70 FT)
DESIGNED DRAFT	3.68 M (12.07 FT)
ACCOMMODATION	15 MEN
FUEL OIL	275.00 M ³ (100 % FULL)
FRESH WATER	53.00 M ³ (100 % FULL)
BALLAST (F.W.)	43.00 M ³ (100 % FULL)
L. D. T.	7.50 M ³ (100 % FULL)
D. D. T.	3.00 M ³ (100 % FULL)
MAIN ENGINE	2 X CUMMINS KTA-50-M2 1600 BHP / 1800 RPM EACH
GEAR BOX	REINTJES WAF 663 5.95 : 1 RATIO
GENERATOR	2 X 80 KW EACH 3/50/415
FREE RUNNING SPEED	11 KNOTS (APPROX.)
BOLLARD PULL	42 TONNES (APPROX.)

This drawing and the information contained herein is supplied on the understanding that they are the exclusive property of WANG SANG & ASSOCIATES SIN. BHD. They must not be used or reproduced in whole or in part without permission in writing.

DATE	MODIFICATION	BY
DESIGNER	WANG SANG & ASSOCIATES SIN. BHD. (COMPANY NO.587290-V) (MARINE DESIGNS ENGINEERING & SUPERVISION) 2nd FLOOR, 4C, LORONG JONG KONG, 96000 J GPO L/B 18, NCS 58212, 96009 SIBU, SARAWAK, MALAYSIA TEL:- 084-331582; 316434 (D), 318375 (R), FAX:- 084-322098 EMAIL : richwg@pc.jaring.my	
SHIP	32M T. S. TUG	
TITLE	GENERAL ARRANGEMENT	
OWNER	SAPANGAR SHIPYARD S/B, SABAH	YD. NO. SS001
BUILDER	NK PMS # (TUG)	P.D.R. LABUAN
CLASS	UNRESTRICTED AREA	JOB NO. 04306 A
DRN	TRACED	CHECKED
RICHARD	SCALE	DRG. NO. REV
27/11/2006	1 : 100	WS01241-06-G

32M0241-G