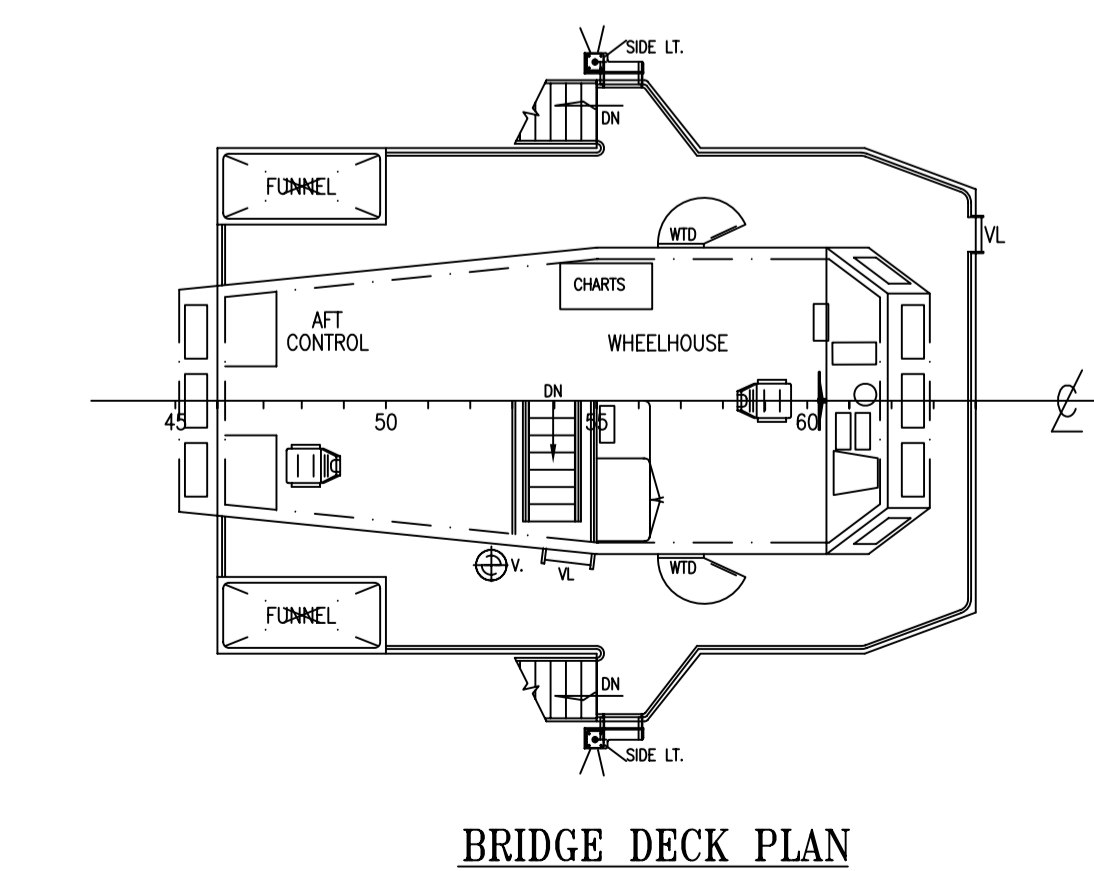
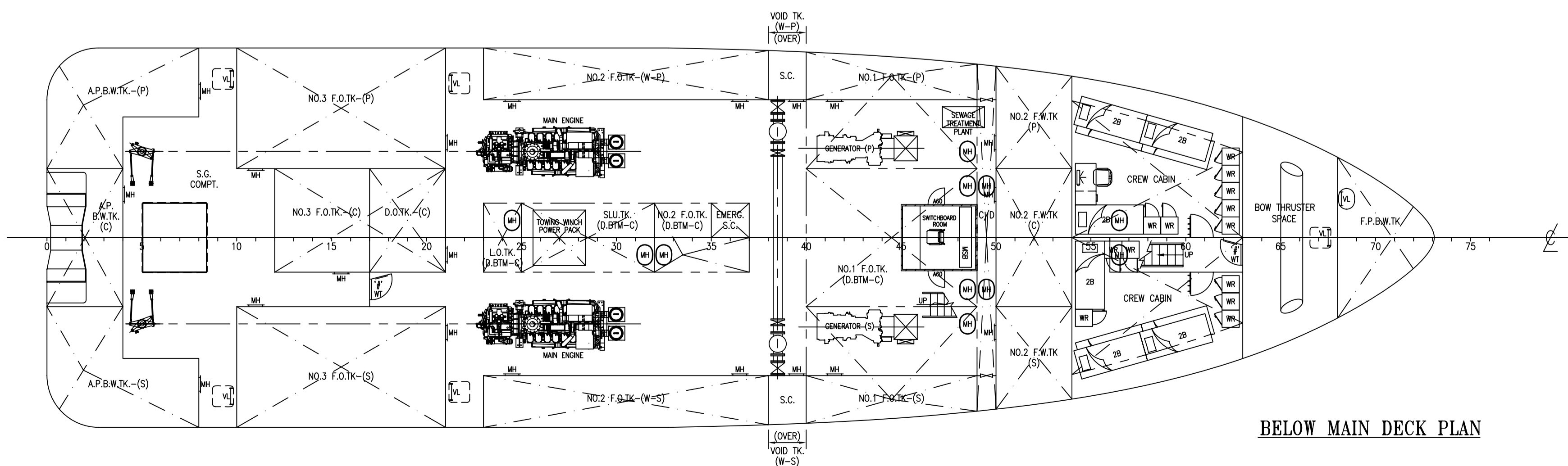
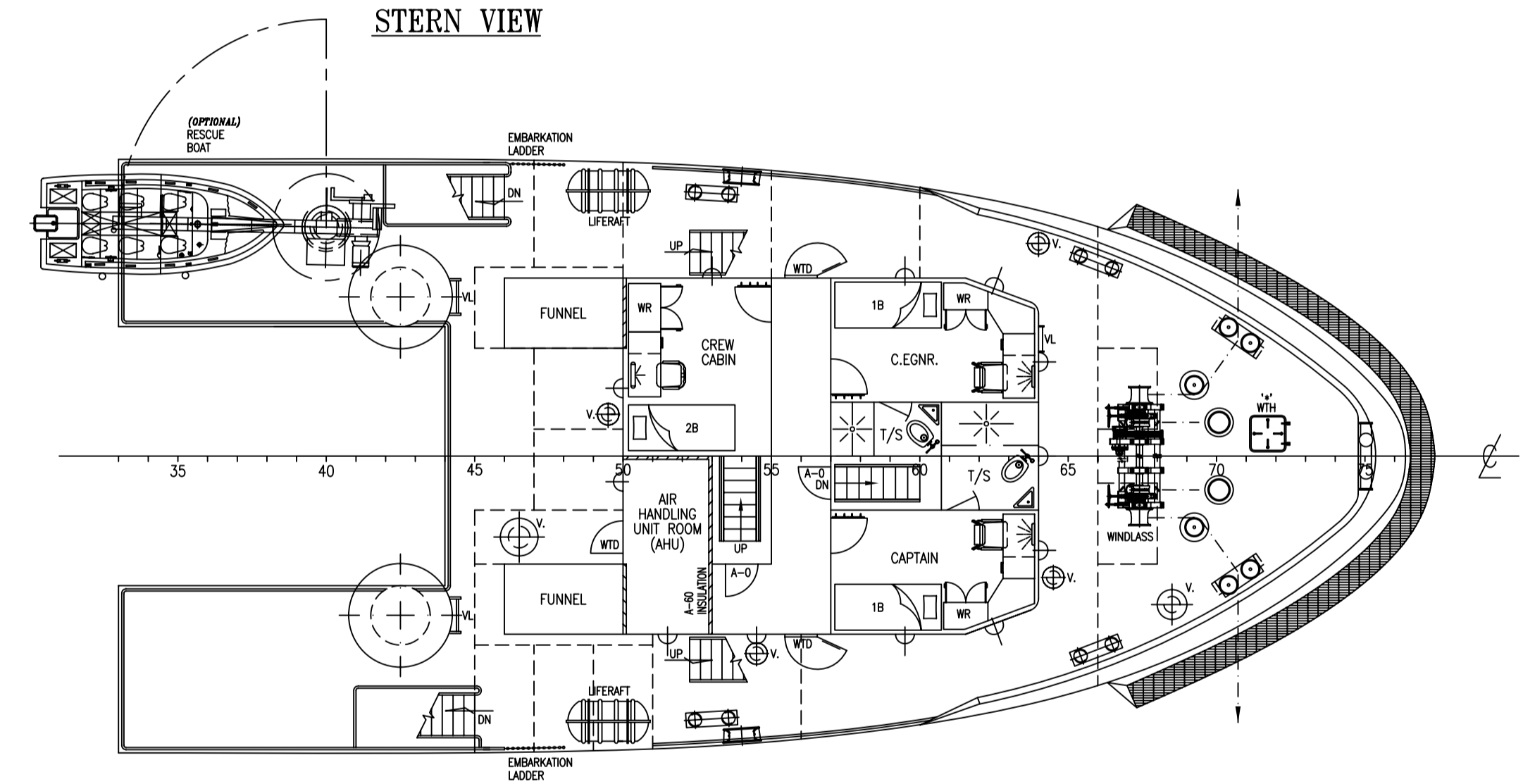
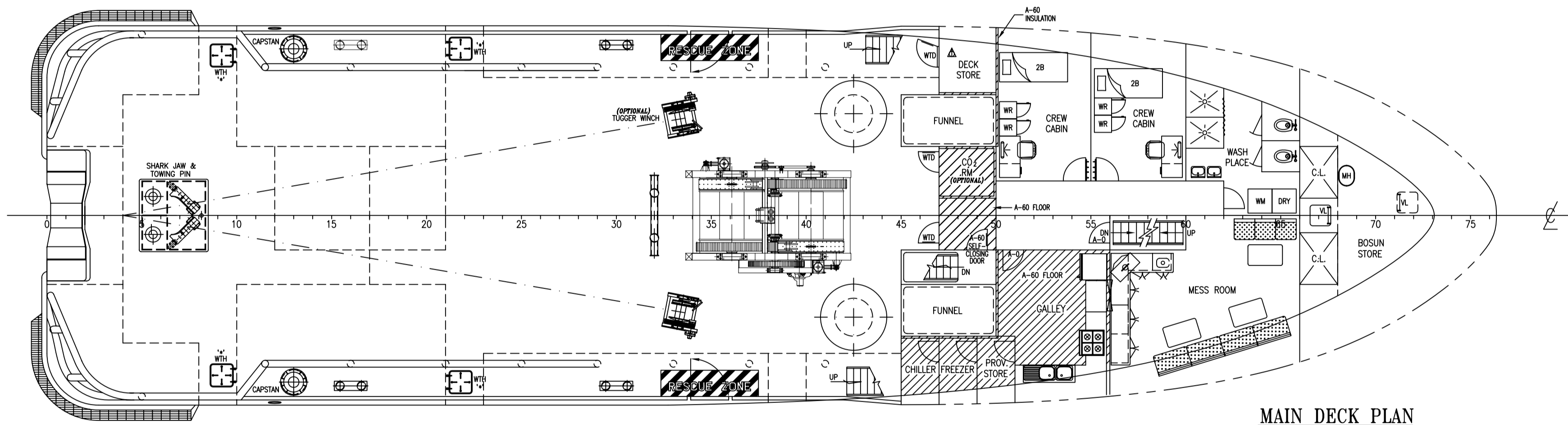
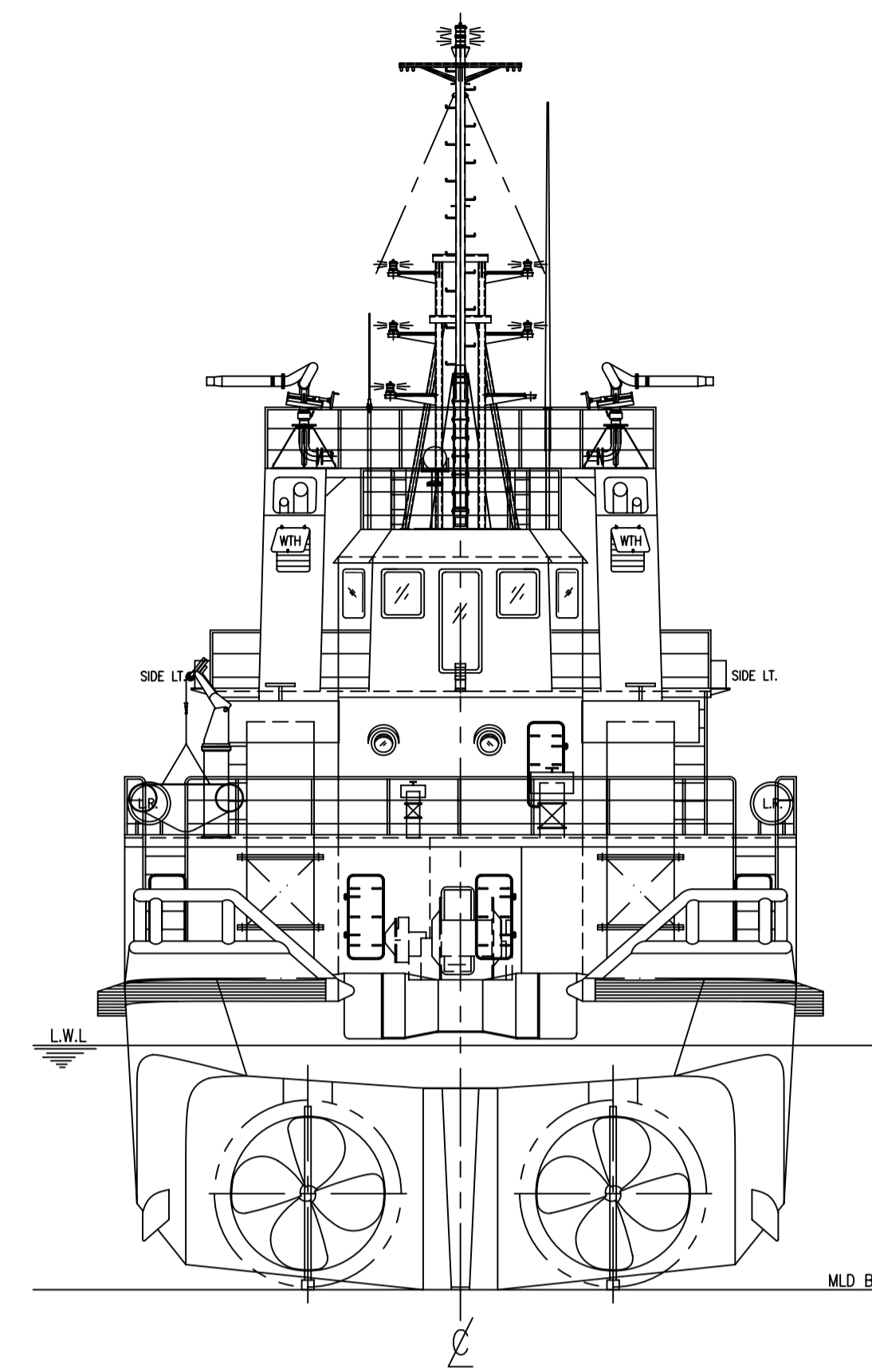
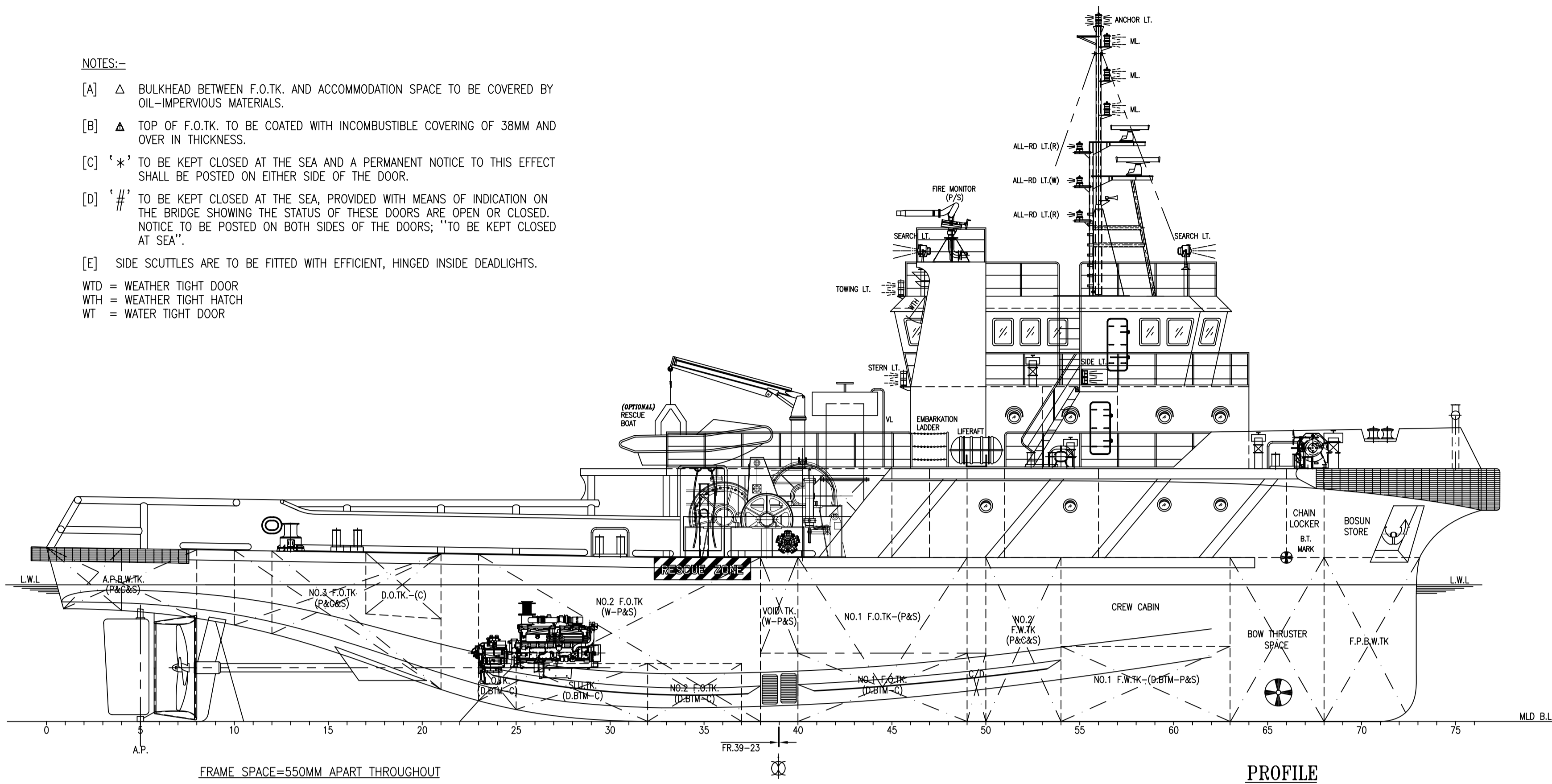


NOTES:-

- [A] Δ BULKHEAD BETWEEN F.O.TK. AND ACCOMMODATION SPACE TO BE COVERED BY OIL-IMPERVIOUS MATERIALS.
 - [B] ▲ TOP OF F.O.TK. TO BE COATED WITH INCOMBUSTIBLE COVERING OF 38MM AND OVER IN THICKNESS.
 - [C] ' * ' TO BE KEPT CLOSED AT THE SEA AND A PERMANENT NOTICE TO THIS EFFECT SHALL BE POSTED ON EITHER SIDE OF THE DOOR.
 - [D] ' # ' TO BE KEPT CLOSED AT THE SEA, PROVIDED WITH MEANS OF INDICATION ON THE BRIDGE SHOWING THE STATUS OF THESE DOORS ARE OPEN OR CLOSED. NOTICE TO BE POSTED ON BOTH SIDES OF THE DOORS; "TO BE KEPT CLOSED AT SEA".
 - [E] SIDE SCUTTLES ARE TO BE FITTED WITH EFFICIENT, HINGED INSIDE DEADLIGHTS.
- WTD = WEATHER TIGHT DOOR
 WTH = WEATHER TIGHT HATCH
 WT = WATER TIGHT DOOR



PRINCIPAL PARTICULARS

LENGTH O.A.	42.000M (137.80FT)
LENGTH W.L.	39.798M (130.57FT)
LENGTH B.P.	37.354M (122.55FT)
BREADTH MLD	11.000M (36.09FT)
DEPTH MLD	4.800M (15.75FT)
DESIGN DRAFT	4.000M (13.12FT)
(SUBJECT TO FREEBOARD ASSIGNMENT)	
COMPLEMENT	20 MEN
MAIN ENGINE	CUMMINS QSK60M
	2200BHP@1800RPM x 2 UNITS
GEAR BOX	RATIO 5.76:1
GENERATOR	250KW x 2 UNITS
F.O. CAPACITY	305 TONS (APPROX.)
F.W. CAPACITY	123 TONS (APPROX.)
B.W. CAPACITY	64 TONS (APPROX.)
PORT OF REGISTRY	SINGAPORE
FLAG	SINGAPORE
NAVIGATION AREA	UNRESTRICTED

DATE	MODIFICATION	REV	BY
UNITED SHIP DESIGN (NAVAL ARCHITECTS) NO.4, 1ST FLOOR, LORONG CHENGAL 2, 96000 SIBU, SARAWAK, MALAYSIA. TEL : +6084-325825; FAX : +6084-333825 EMAIL : usdesign@usdesign.com.my, usdesign@streamyx.com			
SHIP			
42M UTILITY VESSEL			
TITLE			
GENERAL ARRANGEMENT			
OWNER			
BUILDER			
CLASS	BV	YD NO.	
DRAWN	CHECKED	APPROVED	SCALE
WONG	T.K.WONG		DRAWING NO.
22.04.08	29.07.08		1 : 100
			USP/394-G1

This Drawing and the Information contained herein is supplied on the understanding that they are the exclusive property of UNITED SHIP DESIGN SDN BHD. They must not be used or reproduced in whole or in part without permission in writing.